

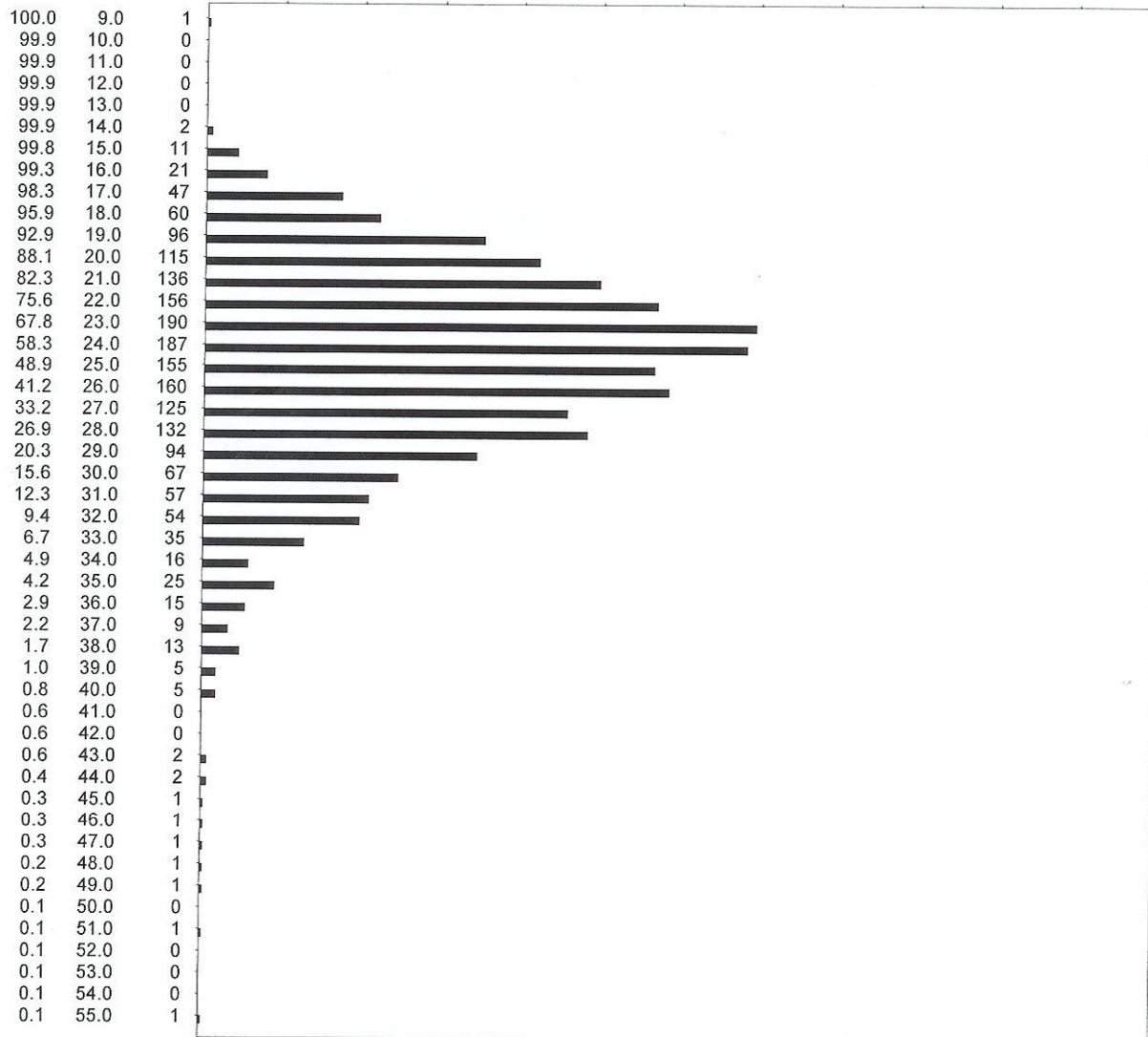
# SGS WOOL TESTING SERVICES TIMARU : Diameter Histogram

Date	: 23Jun11	Diam	= 24.9[4.9] um
Sample ID	: SOLHEIM DOT	CV	= 19.8 %
Description	: 9005/0063	CEM	= 9.0 um
Lot/Client	: SOLHEIM ALPAKKA	CF	= 87.8 %
Operator	: MS	Sample size	= 2000

OFDA174:2.17 Cal: D = 4.8698\*WH -1.77

Filename :

cum.%	mic	count	27	55	82	109	136	164	191	218	245	273	300
-------	-----	-------	----	----	----	-----	-----	-----	-----	-----	-----	-----	-----



**This Certificate or Report may not be reproduced and becomes invalid if amended or altered.** This document is issued by the Company under the SGS General Conditions of Service available on request or at [www.sgs.com/terms\\_and\\_conditions.htm](http://www.sgs.com/terms_and_conditions.htm). Attention is drawn to the limitation of liability, indemnification and jurisdiction issues defined therein. The validity of this document may be confirmed by contacting the address shown below.

SGS Fleece Testing Services, P O Box 2083, 36 Meadows Road, Washdyke, TIMARU. Phone 03 688 7107 or email [nz.wool.timaru@sgs.com](mailto:nz.wool.timaru@sgs.com)